

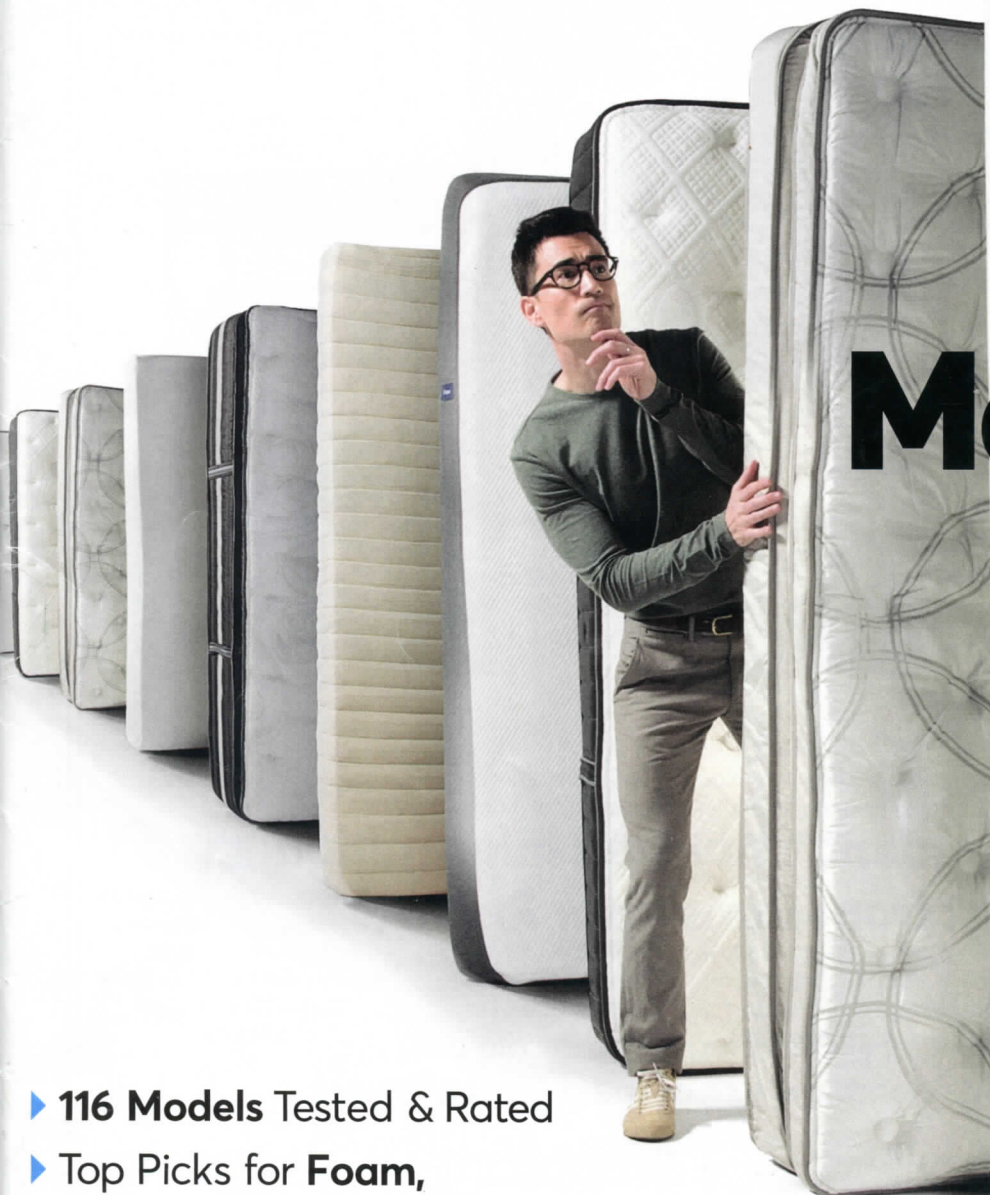


MARCH 2018

Consumer Reports™

REVIEWS & RATINGS

- Grills
- Door Locks
- Stick Vacs
- Drones
- BMW X3



The Best Mattress For You

Find it inside!

- ▶ **116 Models Tested & Rated**
- ▶ **Top Picks for Foam, Innerspring, Adjustable Air**
- ▶ **When & How to Get a Great Price**
- ▶ **Best Bets for a Bed-in-a-Box**

Smarter choices
for a better world

CR.ORG

We spend roughly a third of our life in bed.

The rest of it we spend shopping for the perfect mattress. Not really, of course. But that's how it can feel as we're traipsing from department store to bedding store to warehouse club, inspecting row upon row of identical-looking mattresses and fending off aggressive salespeople all claiming to offer the best deal. It's enough to make you hide under the covers. But a growing number of companies are taking the pain out of the buying process—no more showrooms or endless sales pitches—and promising a dreamy mattress at a competitive price.

The catch? You usually have to order online and the mattress arrives on your doorstep compressed into a box about the size of your coffee table.

“The idea of ordering a mattress online, the same way you make much smaller purchases, is still a novelty, even though it has been an option for several years,” says Claudette Ennis, the analyst who follows the mattress market for Consumer Reports. “Beds-in-a-box represent just a small part of the market today, but we've seen

some pretty remarkable growth in this category.” According to a report by the trade publication Furniture Today, direct-to-consumer mattress companies now command 12 percent of the market, up from 6 percent in 2014. Most beds-in-a-box are foam, but some manufacturers have found inventive ways to cram innerspring and adjustable air mattresses into cartons, too.

To make the process as pain-free as possible, many bed-in-a-box firms offer free shipping, and generous trial periods—usually 100 days, sometimes longer—and return policies. (Policies may differ if the mattress is purchased from a third-party retailer, such as Amazon.) Compare that with Macy's, where returns must be made within 60 days of purchase.

The success of major bed-in-a-box purveyors such as Casper, Leesa, and Tuft & Needle has inspired dozens of copycats. Industry sources report that the number of online mattress retailers is now approaching 200, and many are puffing up their marketing messages in

an attempt to be heard above the fray: “Goldilocks found the bed that's just right, and now you can too,” Purple touts. “The internet's most comfortable mattress,” Tuft & Needle declares. “Tirelessly engineered sleep products for your best rest,” Casper claims.

In short, they're promising to make your sleep dreams come true. Our rigorous, scientific testing and ratings will help you separate hype from reality and guide you to the choice that's best for you. CR tests innerspring, adjustable air, and foam mattresses—including 41 beds-in-a-box so far. (See “How We Test Mattresses,” on page 27, for testing details; see ratings on page 30.)

Here, the best way to purchase and set up a bed-in-a-box, as well as advice for buying traditional mattresses:

A Workaround for Comparison Shopping

One of the most frustrating things about buying a mattress has long been how difficult manufacturers make it to comparison shop. Unlike products that have the same name or model number no matter where they're sold (think a Samsung Family Hub refrigerator or a Vitamix blender), mattress makers often give the same model different names depending on where it's sold, making it almost impossible for a consumer to compare prices. (They might also make slight changes in construction or materials from one retailer to another.) So don't expect a salesperson to be able to guide you to a comparable model.

Bed-in-a-box sellers have eliminated this frustration from the buying process by paring down your choices. Many of these companies sell just one mattress, betting that it will suit most sleepers. Our testing shows that, in theory, at least, this approach can work.

“We've seen several bed-in-a-box mattresses come through the lab that perform consistently, at a level of Good



POOR



CR BEST BUY



RECOMMENDED

MATTRESSES THAT RISE AND SHINE

To help you narrow down the many mattress-buying options, we've selected eight high-scoring models from among the three types we test (foam, innerspring, and adjustable air) at a wide range of prices. (Prices listed are for queen-size mattresses.)

A Firm Lead



BED-IN-A-BOX

✓ Sleep On Latex

Pure Green Firm
\$1,200

81

This highly rated foam bed-in-a-box has an Overall Score that vies with some top conventional (and far more expensive) mattresses. And firm is right—this model scored a 7 out of 10 in our firmness test (with 10 being the firmest). It's a good choice for sleepers of all sizes and sleep styles, particularly if you sleep on your back.

WHERE TO BUY: sleeponlatex.com

Crowd-Pleaser



BED-IN-A-BOX

✓ Casper

The Casper
\$950

80

Casper's signature mattress delivers Very Good support for sleepers of all sizes and styles. The company recently released a more expensive model called The Wave, which performed similarly to The Casper in our tests, though it's softer and offers slightly less support for large and/or tall back sleepers. We think these minor differences make it tough to justify the higher price.

WHERE TO BUY: casper.com

The Price Is Right



BED-IN-A-BOX

✓ Tuft & Needle

T&N Mattress
\$575

74

The T&N Mattress ranks 13th out of the 53 foam models tested and will delight those for whom a low price is a high priority. In our support tests, it earned a score of Very Good for anyone who sleeps on his or her side but was only middling for average and large and/or tall back sleepers. In terms of firmness, it's middle-of-the-road.

WHERE TO BUY: tuftandneedle.com

Infinite Options



FOAM

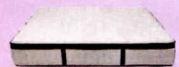
✓ Reverie Dream Supreme II

Hybrid Sleep System Firm
\$3,500

81

Instead of coils, this mattress has 204 foam cylinders of varying densities that can be arranged in more than 37 trillion configurations. (The manufacturer provides instructions on how to place them to create a mattress that's firm, medium, or soft.) It received an Excellent score for durability. It's ideal for petite back sleepers and Very Good for sleepers of every other stripe. It's also very stable.

Top Innerspring



INNERSPRING

✓ Charles P. Rogers

Powercore Estate 5000
\$1,500

80

This top-scoring innerspring mattress in our tests excels at back support and is rated Excellent for back sleepers of every size and Very Good for all side sleepers. It has a high profile (14 inches), is durable, and is among the best we've seen at supporting the curve of the spine.

Stable Sleeper



INNERSPRING

✓ Sealy Posturepedic

Hybrid Elite Kelburn
\$1,350

79

Very Good for most side and back sleepers (though only Good for large and/or tall back sleepers), this mattress scored Excellent for durability and stabilization, so it will last a very long time without losing support and won't rock and roll when a fitful sleeper tosses and turns.

Mile-High Mattress



INNERSPRING

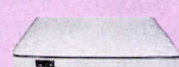
✓ Denver Mattress

Doctor's Choice
\$500

76

A softer mattress that scores equally well for back and side support, this model is extremely durable and has a surface that conforms to many body shapes. It's also fairly stable, enabling sleepers to easily change their sleeping position. All in all, a top performer at a pleasing price.

Air Apparent



ADJUSTABLE AIR

✓ Sleep Number

c2
\$900

81

An air mattress with adjustable firmness, this model provided superb support for most back sleepers and impressive support for side sleepers. It's breathable, which could reduce the likelihood of sleeping hot, and it showed no change after eight years of simulated use. The firmness level of each side can be adjusted independently.

to Excellent, for sleepers of every body size and sleeping style,” says test engineer Chris Regan, who oversees CR’s mattress tests. In fact, the top-rated foam beds-in-a-box score Very Good or Excellent in our support tests for petite, average, and large and/or tall sleepers.

Say Goodbye to ‘Try Before You Buy’

CR has long advised readers to lie on a mattress in the store for at least 10 to 15 minutes before buying. We still consider this critical: Our most recent mattress survey showed that the longer people try out a mattress before buying it, the more likely they are to be satisfied with their purchase. Ordering online eliminates this opportunity.

Certain companies have worked around this limitation by teaming up with walk-in retailers. For example, you can now try a Leesa mattress at West Elm and buy it there for the same price offered at leesa.com. Casper has twin-size mattresses on display at Target that you can curl up on for a foretaste of how they’ll perform.

A handful of the large bed-in-a-box companies have showrooms in large metropolitan areas, so if you’re interested in a different brand but you’re not ready to buy a mattress sight unseen, check the company’s website to see whether it has a showroom nearby. If it doesn’t, you can use our ratings, starting on page 30. Find your size and favorite sleep position, and note the models that provide adequate support for you—and for your sleeping partner.

Unlike mattresses sold at retail, which are usually marked up significantly and offer more price flexibility, bed-in-a-box mattresses are generally sold at a fixed price, making it difficult to haggle.

But there are other ways to save. Check the sellers’ websites for special offers such as a free pillow, and go to goodbed.com, which lists mattress

Do You Need a Box Spring?

A box spring, which serves as a foundation for a mattress, adds to the cost of new bedding, tempting many to do without one. Opinions vary on whether a box spring is really necessary. The International Sleep Products Association says the box spring is responsible for much of the comfort and support a mattress provides, but some mattress sellers say all that many of today’s models require is a sturdy surface, such as a platform bed.

Certain retailers press the issue harder than others. Casper, for example, recommends that buyers of its mattresses use Casper’s own foundation or bed frame. Lull says its mattress will work with everything from box springs to a slatted bed frame to the floor.

Our answer is always the same: Follow the manufacturer’s advice. “Some manufacturers’ warranties require that the mattress be placed on a matching box spring,” says Chris Regan, the engineer who oversees mattress testing at CR. “Not doing so will void the warranty.”

Skipping the box spring can certainly save you money in the short term, but it could cost you far more in the end.

discounts and coupons with savings of \$50 and up. Plenty of bed-in-a-box firms offer discounts around the same holidays that traditional retailers do—Presidents Day, Labor Day, and Black Friday. Use a website’s customer-service chat feature to ask about upcoming promotions or discounts.

Making Your Mattress Feel at Home

Mattresses usually arrive a few days to a week after an order is placed. Although the cartons are compact (the queen-size Lull, for example, comes in a 19x19x43-inch box), they can be heavy, ranging from 60 to 150 pounds, and difficult for someone to wrangle alone.

Shipping is often free, but for an additional fee almost all of these companies offer white-glove delivery, similar to the services offered by a traditional retailer. Casper charges \$75 to \$100 to move the mattress into the bedroom and set it up, and an additional \$50 to remove the old one.

A bed-in-a-box, which is usually foam, is compressed and rolled or folded (or both) before shipping. Most manufacturers recommend unboxing a new mattress within a month or two after it’s delivered. If you’re setting it up yourself, follow the steps outlined by the manufacturer. If you bought a bed frame or platform, put that together first.

Because they can be heavy and unwieldy when fully open, always take the mattress to the bedroom while it’s still in the box, Regan says. “Once you take it out of the box, put it on your box spring or platform before removing the plastic.” (See “Do You Need a Box Spring?” at left.)

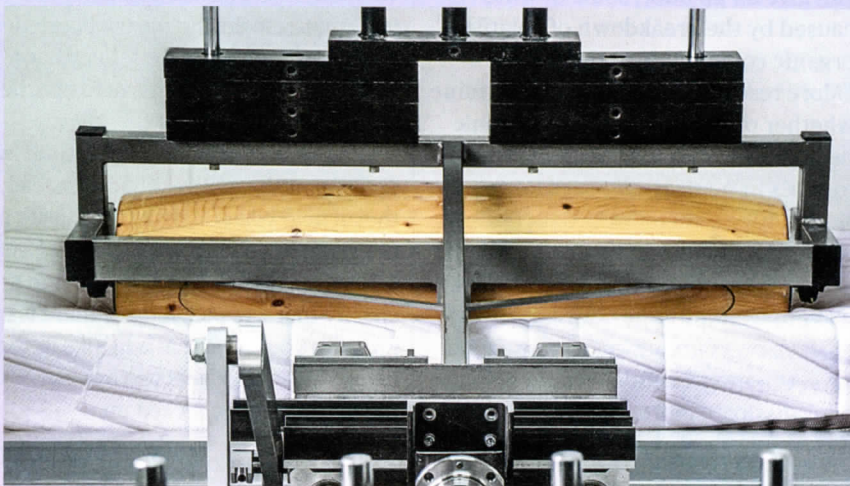
“Some will be wrapped in multiple layers of plastic; others have only one,” Regan says. “You can use scissors or a knife to open them, but take care not to puncture the mattress.”

HOW WE TEST MATTRESSES

CR's scientific testing employs man, woman, machine—and plenty of technology—to push the mattresses we rate to their limits. Here's a behind-the-scenes look at a few key tests we run.

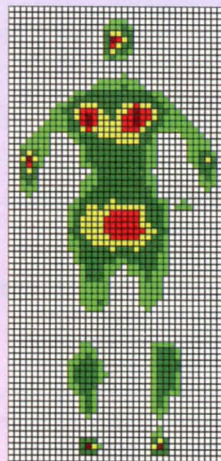
► Durability

A mattress is an investment. In our durability test, a machine pushes and pulls a 308-pound wood roller across the mattress 30,000 times to predict how it will hold up. The test takes about 30 hours and simulates eight to 10 years of use. When the torture ends, we measure for changes in firmness, check for sagging, and inspect for damage. "For a mattress to earn an Excellent rating in durability, we'd see no evidence of damage, sagging, or change in support," says Chris Regan, the engineer who oversees mattress testing. "In the worst models, we see sagging of nearly 10 percent."



◀ Firmness

Not all claims mattress companies make about firmness are accurate. We determine our firmness score with a machine that measures deflection. Then we rank the results on a scale of 1 to 10, with 10 being the firmest.

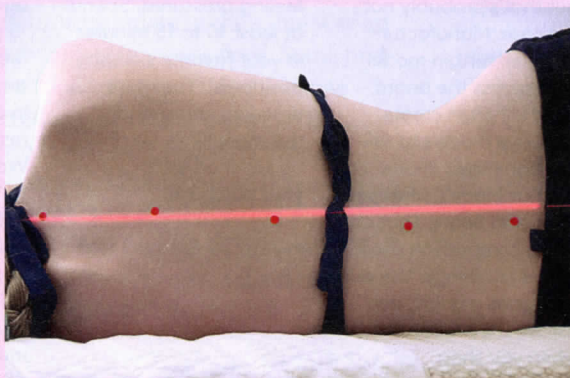


◀ Pressure

To measure pressure (a calculation that's factored into the Overall Score), we lay a mat equipped with 680 sensors over the mattress. A test subject then lies on his or her back, and the sensors record the level of pressure at almost every point where the body comes into contact with the mattress. In the resulting image, red indicates the points of highest pressure. "Those are the places where you might feel tingling, numbness, or even pain," Regan says. "The lower the pressure readings, the higher the score."

► Support

In our support tests, we use human subjects of small and large stature. (We average the results for average-sized sleepers.) For the side-sleeping score, we observe several points along each subject's spine and measure how much they diverge from a straight line. For a model to score well, the points must remain fairly parallel to the surface of the mattress. For the back-sleeper score, we graph dozens of points along the spine and measure whether the mattress maintains the spine's natural curve. —Haniya Rae



Once the wrapping is removed, the mattress regains the volume that was lost when compressed for shipment. It can take a few minutes to a few hours for the mattress to regain its full shape.

The materials in new mattresses can give off an odor, some of which is caused by the breakdown of volatile organic compounds in the foam. "More research is needed to determine whether or not there are any chronic health risks from long-term exposure to VOCs in mattresses," says Don Huber, CR's director of product safety. "The odor should dissipate in a few hours or, at most, a few days. You may want to wait until the odor goes away to sleep on your new mattress," Huber says. Opening a window could help the odor dissipate more rapidly.

How to Have Many Happy Returns

As the old saying goes, you can't put the genie back in the bottle. The same is true for beds-in-a-box. Return policies vary, but if you decide you don't like your mattress during the trial period, you can usually get your money back. Fortunately, you won't have to put the mattress back in the box.

Some sellers provide a full refund but don't want the mattress back. Instead, they'll help you donate it to a charity or nonprofit in your area. Casper and Tuft & Needle say they will help you find a charity that will pick it up. If there is no group in your area that will take it, these companies and others will arrange for the mattress to be picked up.

Many bed-in-a-box companies observe similar trial periods of 100 days or more, but some, such as GhostBed and WinkBeds, require you to keep the mattress for at least 30 days before arranging a return.

In the end, only 7 percent of the beds-in-a-box that are purchased are returned, according to 1010data, a data analytics company. That's more than the 2.2 percent returned at Mattress Firm but an indication that most consumers are pleased with their purchase.

In case you're not one of them, be sure you understand the company's return policy before you buy. And if you have the space and really want to be on the safe side, hang on to your old mattress until you're sure that you're going to stick with your new one.

Smart In-Store Shopping Strategies

Not ready to order a mattress online? Our expert buying advice will help consumers who prefer to shop for a mattress the traditional way—in a store. CR's years of testing have shown that, whichever type you choose, you don't have to spend much more than \$1,000 for a comfortable, supportive mattress, and you can certainly spend a lot less. See page 32 for full results of our mattress tests before you head out to the showrooms.

Understand Model Musical Chairs

If you find a mattress you like at one store and look for it at another retailer, you'll probably be steered toward a model made by the same brand but with a different name. The salesperson might say that it has identical construction, but that's probably not the case. Manufacturers offer certain model lines across the board, but they often create exclusive models to sell through major chains such as Macy's, Mattress Firm, and Sears. That can make comparison shopping a challenge. Use our ratings as a guide, and ask for the precise model when you shop.

Make Your Decision Lying Down

The biggest benefit of shopping at a store is that you can try each mattress you're considering. Wear loose clothes and shoes that you can slip off, and take your favorite pillow. Shoo away the salesperson if you're feeling pressured. Spend at least 10 to 15 minutes in your favorite sleeping position(s). The more time you can spend, the more likely you'll be satisfied with your purchase.

Check the Fine Print

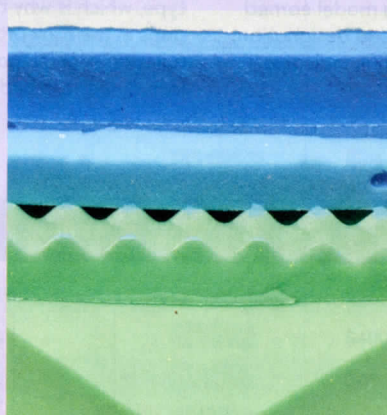
Make sure the store offers a full refund or credit toward another mattress. Retailers' return periods, sometimes called "comfort guarantees," range from a couple of weeks to 120 days. Some, including Macy's and Sears, charge a 15 percent restocking fee. Macy's charges an \$85 pickup fee in addition to the restocking charge. Warranties range from 10 to 25 years and cover only manufacturing defects such as sagging and loose or broken coils. Coverage is frequently prorated, meaning that it decreases over time.

Try to Haggle

Once you've settled on a model, ask for a better price. Many businesses, such as warehouse clubs, have fixed prices and won't budge. But for retailers that do negotiate, huge markups allow them to lower prices by 50 percent or more during sales. Our recommendation: Insist on a sale price you've seen for the mattress you want, and don't be afraid to walk out. More than half the readers in our survey paid \$500 to \$1,750 for a mattress. Those who successfully haggled saved a median of \$205.

KNOW YOUR TYPE

There are three major mattress categories (our ratings, beginning on page 30, are divided into these types). This primer will help you make sense of their relative benefits and drawbacks.



Innerspring

More than 60 percent of mattresses sold today are innerspring models. Composed of steel coils in various configurations, they can also include layers of cushioning, such as a pillowtop; layers of standard foam; and layers of gel-infused foam, which manufacturers claim cools you down. (Our past tests have shown that innerspring mattresses containing gel do tend to sleep slightly cooler but that the reverse is true for gel-infused foam beds.) Shifting positions on a traditional innerspring mattress tends to be easy, but on certain models your partner might feel a bounce when you do so. (We measure this in our stabilization test.) In our 2017 mattress satisfaction survey of nearly 62,000 Consumer Reports subscribers, 65 percent of innerspring owners were highly satisfied with their mattress.

Foam

Foam mattresses, usually made of polyurethane or latex, vary widely in their construction. Many manufacturers use multiple layers of different types of foam, but our testing has shown no correlation between performance and the type of foam used. Memory foam, a temperature-sensitive variation that softens as it gets warmer, is well-regarded by those with health problems—such as back and joint pain—that affect sleep, according to our mattress satisfaction survey. Some owners feel that memory foam sleeps hot. We've found that any foam mattress can sleep hot because the material doesn't allow for air to circulate in the same way an innerspring mattress does. Some find that it takes more effort to change positions on a foam mattress. Be sure to roll over and switch sides when you try out foam mattresses (and check our stabilization scores). Seventy-five percent of surveyed CR subscribers who own a foam mattress were highly satisfied with it.

Adjustable Air

This niche category of mattress is dominated by the Sleep Number brand. These are usually topped with layers of foam (so they share certain qualities of foam mattresses) and can be inflated by an electric pump to any firmness you desire at the push of a button. In fact, on most models, each half can be inflated to a different firmness level, allowing each sleeper to customize his or her side when two people share a bed. Eighty percent of surveyed CR subscribers who own an adjustable air mattress reported that they were highly satisfied with it. And folks with health problems that affect their sleep are even more likely to be highly satisfied with an adjustable air mattress than owners of foam mattresses are.

BEDS-IN-A-BOX

Like traditional mattresses, beds-in-a-box come in three types: adjustable air, foam, and innerspring. To make it easier for you to compare bed-in-a-box models with one another, we've consolidated the ratings of the 41 we've tested in this

chart. Most of the mattresses we tested scored Excellent or Very Good, and 12 foam models and one innerspring model earned the recommended designation. Note that the rank indicates

where these mattresses fall in the complete list of CR's mattress ratings, according to type, which is why there are gaps in the rank order. For full ratings of all mattresses, including these beds-in-a-box, turn to page 32.



Recommended	Rank	Brand & Model	Overall Score	Price	Test Results								
					Support			Durability	Stabilization	Firmness rating			
Petite side sleeper	Average side sleeper	Large/tall side sleeper	Petite back sleeper	Average back sleeper	Large/tall back sleeper								
ADJUSTABLE AIR													
	3	Sleep Number It Bed ¹	60	\$1,100	↓	↓	↓	↓	↓	↓	↑	↓	3
FOAM													
✓	1	Essentia Stratami ^{2,3,4}	81	\$2,445	↑	↑	↑	↑	↑	↑	↑	↑	6
✓	3	Sleep on Latex Pure Green Firm ^{2,3,4}	81	\$1,200	↑	↑	↑	↑	↑	↑	↑	↑	7
\$	4	Casper The Casper ⁵	80	\$950	↑	↑	↑	↑	↑	↑	↑	↑	5
✓	5	Casper The Wave ^{2,5}	80	\$1,850	↑	↑	↑	↑	↑	↓	↑	↑	3
\$	6	Serta Luxury 12" Gel Memory Foam ^{5,6}	78	\$500	↑	↑	↑	↑	↑	↑	↑	↑	7
\$	7	Lull The Lull ⁵	78	\$800	↑	↑	↓	↑	↑	↑	↑	↑	6
✓	8	GhostBed GhostBed ^{2,5,6}	77	\$795	↑	↑	↑	↑	↑	↑	↑	↑	7
✓	9	Sleep Innovations Marley ^{5,6}	77	\$430	↑	↑	↓	↑	↑	↑	↑	↑	7
✓	10	Purple The Purple Bed ³	76	\$1,000	↑	↑	↓	↑	↑	↓	↑	↑	3
✓	11	My Pillow 10" Mattress ^{5,6}	74	\$900	↑	↓	↓	↑	↑	↑	↑	↑	6
✓	12	Ashley Sleep The Perfect 10 ^{5,6}	74	\$700	↑	↑	↓	↑	↑	↑	↑	↑	4
\$	13	Tuft & Needle T&N Mattress ^{3,6}	74	\$575	↑	↑	↑	↑	↓	↓	↑	↑	5
	16	Brentwood Home Sequoia Euro Top ^{5,6}	72	\$1,495	↑	↓	↓	↑	↑	↓	↑	↑	5
	18	Bear Queen ⁶	71	\$850	↑	↑	↓	↑	↑	↓	↑	↑	6
	21	Novosbed Memory Foam ⁵	69	\$1,100	↑	↓	↓	↑	↑	↓	↑	↓	4
	23	Luxi The Luxi Soft ^{2,5}	69	\$1,100	↑	↑	↑	↓	↓	↑	↑	↑	4
	24	Yogabed Luxury Foam Y10 ³	69	\$850	↑	↓	↓	↑	↑	↓	↑	↑	6
	26	Novaform Altabella (Costco) ^{5,6}	69	\$1,300	↑	↑	↑	↓	↓	↓	↑	↓	4
	27	Dromma Triple Layer ^{2,5,6}	69	\$850	↑	↑	↓	↑	↓	↓	↑	↑	4
	28	Sleep Innovations Taylor 12 inch Gel Swirl ^{5,6}	68	\$470	↑	↑	↑	↑	↑	↓	↑	↓	6
	29	Novaform Comfort Grande (Costco) ^{5,6}	68	\$600	↑	↑	↑	↑	↓	↓	↑	↑	6

¹ Firmness displayed is an average value. ² Includes a latex-foam layer. ³ Made of foam but not memory foam. ⁴ Certified organic. ⁵ Memory foam. ⁶ Includes a layer of ael-infused foam. ⁷ Firm models are memory foam; medium-firm models have latex foam.

Recommended	Rank	Brand & Model	Overall Score	Price	Test Results								
					Pette side sleeper	Average side sleeper	Large/tall side sleeper	Pette back sleeper	Average back sleeper	Large/tall back sleeper	Durability	Stabilization	Firmness rating
FOAM <i>Continued</i>													
	30	Wright 1.27 Luxury Memory Foam ⁵ ⁶	68	\$1,785	↑	↑	↓	↑	↓	↓	↑	↑	4
	31	Leesa Leesa Medium Firm ³ ⁵	68	\$890	↑	↑	↓	↑	↓	↓	↑	↑	5
	35	Brooklyn Bedding Queen Med. Firm ² ³	65	\$750	↑	↑	↓	↓	↓	↓	↑	↑	4
	39	Luxi The Luxi Medium Firm ² ⁵	64	\$1,000	↑	↑	↑	↓	↓	↓	↑	↑	3
	40	Spa Sensations Memory Foam SPA-1000Q ⁵	64	\$360	↑	↓	↓	↑	↑	↓	↓	↓	6
	41	Ikea Matrand ² ⁷	63	\$400	↑	↓	↓	↑	↓	↓	↑	↑	6
	44	Cocoon by Sealy Cocoon Firm ⁵	61	\$850	↑	↓	↓	↑	↑	↓	↑	↓	6
	45	Dream Bed The Dream Original Mattress ²	61	\$830	↑	↑	↓	↑	↓	↓	↑	↓	5
	47	Casper The Essential ⁵	60	\$600	↑	↑	↓	↑	↓	↓	↑	↓	3
	49	Ara 100% Visco Memory Foam (Costco) ⁵	55	\$1,100	↑	↑	↓	↓	↓	↓	↑	↓	2
	50	Serta iComfort Blue 100 Gentle Firm ⁶	55	\$2,750	↓	↓	↓	↑	↓	↓	↑	↓	4
	52	Luxi The Luxi Firm ² ⁵	54	\$1,000	↑	↑	↑	↓	↓	↓	↑	↑	3
INNERSPRING													
✓	4	Voila Hybrid ² ⁵	77	\$1,200	↑	↑	↑	↑	↑	↑	↑	↑	6
	17	King Koil Grand Eurotop ⁶	72	\$560	↑	↑	↑	↑	↑	↓	↑	↑	5
	21	Sapira by Leesa Luxury ⁵	71	\$1,475	↑	↑	↓	↑	↑	↑	↑	↑	3
	30	Night Therapy Euro Box Top Spring	69	\$248	↑	↑	↑	↓	↓	↓	↑	↑	3
	47	My Green Mattress The Natural Escape ⁴	60	\$1,000	↑	↑	↑	↓	↓	↓	↑	↓	3
	57	Modern Sleep Pillowtop Hybrid ⁶	50	\$595	↑	↑	↓	↓	↓	↓	↑	↑	2
	58	Classic Brands Mercer Hybrid ⁶	49	\$440	↓	↓	↑	↓	↓	↓	↑	↑	2

HOW BOXED BEDS WERE BORN

Casper, which launched in 2014, gets a lot of the credit for creating the bed-in-a-box. But Bill Bradley, a machinist from Johnson City, Tenn., built a machine that could compress and roll foam mattresses to

a size small enough to fit in a shipping box years before that. He began selling boxed mattresses online in 2007, and he claims to be the first person to do so.

Bradley's business (see bedinabox.com)

didn't take a very big bite out of an industry still dominated by long-established players such as 1800mattress.com and Mattress Firm. It wasn't until several years later, when Casper and early competitors

came on to the scene—sometimes backed by millions in venture capital—that the idea really caught on and consumers began to consider a boxed mattress as a serious bedding option.

Ratings > **Bedding Down** Complete ratings of the adjustable air, foam, and innerspring mattresses we've tested (including beds-in-a-box), so you can see how each model stacks up against the rest.

Recommended	Rank	Brand & Model	Overall Score	Price	Test Results								Firmness rating	Bed-in-a-box
					Petite side sleeper	Average side sleeper	Large/tall side sleeper	Petite back sleeper	Average back sleeper	Large/tall back sleeper	Durability	Stabilization		
ADJUSTABLE AIR														
✓	1	Sleep Number i8 bed ¹ ³	84	\$2,900	↑	↑	↑	↑	↑	↑	↑	↑	3	
Ⓢ	2	Sleep Number c2 bed ¹	81	\$900	↑	↑	↑	↑	↑	↑	↑	↑	9	
	3	Sleep Number It Bed ¹	60	\$1,100	↓	↓	↓	↓	↓	↓	↓	↓	3	•
FOAM														
✓	1	Essentia Stratami ² ³ ⁴	81	\$2,445	↑	↑	↑	↑	↑	↑	↑	↑	6	•
✓	2	Reverie Dream Supreme II Hybrid Sleep System Firm ⁴	81	\$3,500	↑	↑	↑	↑	↑	↑	↑	↑	4	
✓	3	Sleep on Latex Pure Green Firm ² ³ ⁴	81	\$1,200	↑	↑	↑	↑	↑	↑	↑	↑	7	•
Ⓢ	4	Casper The Casper ⁵	80	\$950	↑	↑	↑	↑	↑	↑	↑	↑	5	•
✓	5	Casper The Wave ² ⁵	80	\$1,850	↑	↑	↑	↑	↑	↓	↑	↑	3	•
Ⓢ	6	Serta Luxury 12" Gel Memory Foam ⁵ ⁶	78	\$500	↑	↑	↑	↑	↑	↑	↑	↑	7	•
Ⓢ	7	Lull The Lull ⁵	78	\$800	↑	↑	↓	↑	↑	↑	↑	↑	6	•
✓	8	GhostBed GhostBed ² ⁵ ⁶	77	\$795	↑	↑	↑	↑	↑	↑	↑	↑	7	•
✓	9	Sleep Innovations Marley ⁵ ⁶	77	\$430	↑	↑	↓	↑	↑	↑	↑	↑	7	•
✓	10	Purple The Purple Bed ³	76	\$1,000	↑	↑	↓	↑	↑	↓	↑	↑	3	•
✓	11	My Pillow 10" Mattress ⁵ ⁶	74	\$900	↑	↓	↓	↑	↑	↑	↑	↑	6	•
✓	12	Ashley Sleep The Perfect 10 ⁵ ⁶	74	\$700	↑	↑	↓	↑	↑	↑	↑	↑	4	•
Ⓢ	13	Tuft & Needle T&N Mattress ³ ⁶	74	\$575	↑	↑	↑	↑	↓	↓	↑	↑	5	•
✓	14	Serta iComfort Savant EverFeel ⁵ ⁶	74	\$1,575	↑	↓	↓	↑	↑	↑	↑	↑	4	
✓	15	Reverie Dream Supreme II Hybrid Sleep System Medium ⁴	73	\$3,500	↑	↑	↑	↑	↓	↓	↑	↑	3	
	16	Brentwood Home Sequoia Euro Top ⁵ ⁶	72	\$1,495	↑	↓	↓	↑	↑	↓	↑	↑	5	•
	17	Spring Air Back Supporter Natalie (Costco) ² ⁵	71	\$1,100	↑	↓	↓	↑	↑	↑	↓	↑	7	
	18	Bear Queen ⁶	71	\$850	↑	↑	↓	↑	↑	↓	↑	↑	6	•
	19	OrganicPedic by OMI Flora Nouveau ² ³ ⁴	71	\$4,445	↓	↓	↓	↑	↓	↓	↑	↑	4	
	20	Ikea Morgongava ² ³	70	\$1,000	↑	↓	↓	↑	↑	↑	↑	↑	5	
	21	Novosbed Memory Foam ⁵	69	\$1,100	↑	↓	↓	↑	↑	↓	↑	↓	4	•
	22	Eight The Smart Mattress	69	\$1,050	↑	↑	↓	↑	↓	↓	↑	↑	5	
	23	Luxi The Luxi Soft ² ⁵	69	\$1,100	↑	↑	↑	↓	↓	↑	↑	↑	4	•
	24	Yogabed Luxury Foam Y10 ³	69	\$850	↑	↓	↓	↑	↑	↓	↑	↑	6	•
	25	Reverie Dream Supreme II Hybrid Sleep System Soft ⁴	69	\$3,500	↑	↑	↑	↓	↓	↓	↑	↑	3	
	26	Novaform Altabella (Costco) ⁵ ⁶	69	\$1,300	↑	↑	↑	↓	↓	↓	↑	↓	4	•
	27	Dromma Triple Layer ² ⁵ ⁶	69	\$850	↑	↑	↓	↑	↓	↓	↑	↑	4	•
	28	Sleep Innovations Taylor 12 inch Gel Swirl ⁵ ⁶	68	\$470	↑	↑	↑	↑	↑	↓	↑	↓	6	•

¹ Firmness displayed is an average value. ² Includes a latex-foam layer. ³ Made of foam but not memory foam. ⁴ Certified organic. ⁵ Memory foam. ⁶ Includes a layer of gel-infused foam. ⁷ Firm models are memory foam; medium-firm models have latex foam.

Recommended	Rank	Brand & Model	Overall Score	Price	Test Results									
					Support			Durability	Stabilization	Firmness rating	Bed-in-a-box			
Petite side sleeper	Average side sleeper	Large/tall side sleeper	Petite back sleeper	Average back sleeper	Large/tall back sleeper									

FOAM *Continued*

	29	Novaform Comfort Grande (Costco) ^{[5][6]}	68	\$600	↑	↑	↑	↑	↓	↓	↑	↑	6	•
	30	Wright 1.27 Luxury Memory Foam ^{[5][6]}	68	\$1,785	↑	↑	↓	↑	↓	↓	↑	↑	4	•
	31	Leesa Leesa Medium Firm ^{[3][5]}	68	\$890	↑	↑	↓	↑	↓	↓	↑	↑	5	•
	32	Ikea Myrbacka ^{[2][5][7]}	68	\$500	↑	↓	↓	↑	↑	↓	↑	↑	7	
	33	The Original Mattress Factory Serenity Latex ^{[2][3]}	67	\$1,540	↑	↑	↑	↓	↓	↓	↑	↓	4	
	34	Therapedic Eco-Gel2 Oceanfront ^{[5][6]}	66	\$2,500	↑	↑	↑	↓	↓	↓	↑	↓	2	
	35	Brooklyn Bedding Queen Med. Firm ^{[2][3]}	65	\$750	↑	↑	↓	↓	↓	↓	↑	↑	4	•
	36	Amerisleep AS3 ^[3]	65	\$1,200	↑	↑	↓	↑	↓	↓	↑	↑	3	
	37	Tempur-Pedic Tempur-Contour Supreme ^{[5][6]}	64	\$2,200	↑	↓	↓	↓	↓	↓	↑	↓	2	
	38	Sleep Science Escape	64	\$1,800	↑	↑	↓	↓	↓	↓	↑	↑	2	
	39	Luxi The Luxi Medium Firm ^{[2][5]}	64	\$1,000	↑	↑	↑	↓	↓	↓	↑	↑	3	•
	40	Spa Sensations Memory Foam SPA-1000Q ^[5]	64	\$360	↑	↓	↓	↑	↑	↓	↓	↓	6	•
	41	Ikea Matrand ^{[2][7]}	63	\$400	↑	↓	↓	↑	↓	↓	↑	↑	6	•
	42	Dormeo 230GX ^[6]	63	\$1,410	↓	↓	↓	↓	↓	↓	↑	↑	2	
	43	Sealy Premium Collection Gratifying ^[6]	62	\$1,850	↑	↑	↑	↓	↓	↓	↑	↑	2	
	44	Cocoon by Sealy Cocoon Firm ^[5]	61	\$850	↑	↓	↓	↑	↑	↓	↑	↓	6	•
	45	Dream Bed The Dream Original Mattress ^[2]	61	\$830	↑	↑	↓	↑	↓	↓	↑	↓	5	•
	46	Loom & Leaf Luxury Relaxed Firm ^{[4][6]}	60	\$1,000	↑	↑	↑	↓	↓	↓	↑	↓	4	
	47	Casper The Essential ^[5]	60	\$600	↑	↑	↓	↑	↓	↓	↑	↓	3	•
	48	Serta iComfort Savant III ^[6]	56	\$1,775	↑	↓	↓	↓	↓	↓	↑	↑	2	
	49	Ara 100% Visco Memory Foam (Costco) ^[5]	55	\$1,100	↑	↑	↓	↓	↓	↓	↑	↓	2	•
	50	Serta iComfort Blue 100 Gentle Firm ^[6]	55	\$2,750	↓	↓	↓	↑	↓	↓	↑	↓	4	•
	51	Palmping Colva PP-4W-003Q ^{[2][3][4]}	54	\$3,400	↑	↑	↑	↑	↓	↓	↓	↓	8	
	52	Luxi The Luxi Firm ^{[2][5]}	54	\$1,000	↑	↑	↑	↓	↓	↓	↑	↑	3	•
	53	Airweave Airfiber	51	\$1,300	↓	↓	↓	↑	↑	↑	↓	↓	10	

INNERSPRING

✓	1	Charles P. Rogers Powercore Estate 5000 ^[2]	80	\$1,500	↑	↑	↑	↑	↑	↑	↑	↑	6	
✓	2	Sealy Posturepedic Hybrid Elite Kelburn ^[6]	79	\$1,350	↑	↑	↑	↑	↑	↓	↑	↑	4	
✓	3	Stearns & Foster Lux Estate Middletown ^[6]	78	\$2,300	↑	↑	↑	↑	↑	↑	↑	↑	4	
✓	4	Voila Hybrid ^{[2][5]}	77	\$1,200	↑	↑	↑	↑	↑	↑	↑	↑	6	•
✓	5	WinkBeds The WinkBed	77	\$1,350	↑	↑	↑	↑	↑	↓	↑	↑	5	
\$	6	Denver Mattress Doctor's Choice	76	\$500	↑	↑	↑	↑	↑	↑	↑	↓	3	

Recommended	Rank	Brand & Model	Overall Score	Price	Test Results									
					Support						Durability	Stabilization	Firmness rating	Bed-in-a-box
					Petite side sleeper	Average side sleeper	Large/tall side sleeper	Petite back sleeper	Average back sleeper	Large/tall back sleeper				
INNERSPRING <i>Continued</i>														
✓	7	Beautyrest Silver Golden Gate Pillowtop ^⑥	75	\$1,130	↑	↑	↑	↓	↓	↓	↑	↑	4	
\$	8	Charles P. Rogers St. Regis Pillowtop	75	\$1,100	↑	↓	↓	↑	↑	↑	↑	↑	6	
✓	9	Sealy Posturepedic Performance Lawson Euro Pillowtop ^⑥	75	\$1,570	↓	↓	↓	↑	↑	↑	↑	↑	6	
✓	10	Beautyrest Silver High Tide Luxury Firm Summit ^⑥	75	\$1,355	↓	↓	↓	↑	↑	↓	↑	↑	2	
✓	11	Saatva Flagship Luxury Firm Eurotop	74	\$1,000	↓	↑	↑	↑	↑	↓	↑	↓	3	
✓	12	Ethan Allen EA Signature Firm ^⑥	74	\$2,000	↑	↑	↑	↑	↑	↑	↑	↑	7	
✓	13	MacyBed Lux by Kingsdown ^⑤	73	\$1,500	↑	↑	↑	↑	↓	↓	↑	↑	3	
✓	14	Stearns & Foster Signature Garrick Luxury ^⑥	73	\$2,200	↑	↓	↓	↑	↑	↓	↑	↑	4	
✓	15	Duxiana Dux 1001	73	\$4,950	↑	↑	↑	↑	↑	↓	↑	↓	4	
	16	Tempur-Pedic Tempur-Flex Supreme Breeze ^{⑤⑥}	72	\$3,500	↑	↑	↓	↑	↑	↓	↑	↑	4	
	17	King Koil Grand Eurotop ^⑥	72	\$560	↑	↑	↑	↑	↑	↓	↑	↑	5	
	18	Beautyrest Black Mariela	72	\$2,500	↓	↑	↑	↓	↓	↓	↑	↑	2	
	19	Beautyrest Silver Hybrid Grand Isle Firm ^⑥	72	\$1,285	↑	↑	↓	↑	↑	↓	↑	↓	4	
	20	Beautyrest Silver Navy Pier Pillowtop ^⑥	71	\$700	↑	↑	↑	↑	↓	↓	↑	↑	3	
	21	Sapira by Leesae Luxury ^⑤	71	\$1,475	↑	↑	↓	↑	↑	↑	↑	↑	3	
	22	Tempur-Pedic Tempur-Flex Prima Firm ^⑤	71	\$2,100	↑	↓	↓	↑	↑	↓	↑	↑	4	
	23	Sealy Posturepedic Premier Hybrid Copper Cushion Firm ^⑥	70	\$1,275	↑	↑	↑	↑	↑	↓	↑	↑	4	
	24	The Original Mattress Factory Orthopedic Luxury Firm	70	\$540	↑	↑	↑	↑	↑	↓	↓	↓	4	
	25	Kingsdown Passions Imagination ^⑥	70	\$1,140	↑	↑	↑	↑	↓	↓	↑	↑	3	
	26	Beautyrest Legend McFarland ^{②⑥}	69	\$1,950	↑	↑	↑	↑	↓	↓	↑	↑	4	
	27	Eastman House Lifetime Collection Eternity Euro Pillowtop	69	\$1,500	↑	↑	↑	↓	↓	↓	↑	↓	4	
	28	Sealy Posturepedic Performance Chase Pointe Eurotop ^⑥	69	\$970	↑	↓	↓	↑	↑	↑	↑	↓	6	
	29	Bob-O-Pedic Hybrid Queen Cushion Firm ^⑥	69	\$800	↓	↓	↑	↑	↓	↓	↑	↑	3	
	30	Night Therapy Euro Box Top Spring	69	\$248	↑	↑	↑	↓	↓	↓	↑	↑	3	
	31	Charles P. Rogers Estate Nano ^②	68	\$2,400	↑	↑	↓	↑	↑	↓	↑	↑	5	
	32	Beautyrest Black Hybrid Gladney ^⑥	67	\$2,750	↑	↑	↑	↑	↓	↓	↑	↓	3	
	33	Intellibed Posture Perfect	67	\$3,800	↑	↑	↑	↑	↓	↓	↑	↓	3	
	34	Sealy Performance Dolby Cushion Firm ^⑥	67	\$1,700	↓	↓	↓	↑	↑	↓	↑	↑	4	
	35	Spring Air Isabella	66	\$1,599	↑	↑	↑	↑	↑	↓	↑	↓	4	
	36	Tempur-Pedic Tempur-Flex Flex Supreme ^{⑤⑥}	66	\$2,599	↑	↓	↓	↓	↓	↓	↑	↑	3	
	37	Saatva Luxury Firm Euro Pillowtop	66	\$900	↑	↑	↑	↑	↑	↓	↑	↓	3	
	38	Eclipse Comformatic Collection Diamond Plush ^⑥	64	\$800	↓	↓	↓	↓	↓	↓	↑	↑	3	

① Firmness displayed is an average value. ② Includes a latex-foam layer. ③ Made of foam but not memory foam. ④ Certified organic. ⑤ Memory foam. ⑥ Includes a layer of gel-infused foam. ⑦ Firm models are memory foam; medium-firm models have latex foam.



POOR



EXCELLENT



CR BEST BUY

RECOMMENDED

Recommended	Rank	Brand & Model	Overall Score	Price	Test Results									
					Support						Durability	Stabilization	Firmness rating	Bed-in-a-box
Petite side sleeper	Average side sleeper	Large/tall side sleeper	Petite back sleeper	Average back sleeper	Large/tall back sleeper									
INNERSPRING <i>Continued</i>														
	39	Denver Mattress Telluride	63	\$1,100	↑	↑	↓	↓	↓	↓	↑	↓	3	
	40	Ashley Sleep Anniversary Edition [®]	63	\$600	↓	↓	↓	↑	↑	↓	↑	↑	5	
	41	Black Label Gel Queen Firm ² [®]	63	\$850	↑	↓	↓	↓	↓	↓	↑	↑	2	
	42	Hampton & Rhodes HR420S Plush	63	\$600	↓	↑	↑	↓	↓	↓	↑	↓	2	
	43	Serta iSeries Profiles Prominence Super Pillowtop [®]	62	\$2,275	↓	↓	↑	↓	↓	↓	↑	↑	2	
	44	Shifman Handmade Original	61	\$3,500	↑	↑	↑	↑	↑	↑	↓	↓	8	
	45	Restonic ComfortCare Select Hampton ² [®]	61	\$1,500	↓	↑	↑	↓	↓	↓	↓	↑	3	
	46	Serta iComfort Applause II [®]	61	\$1,155	↑	↑	↑	↓	↓	↓	↑	↑	3	
	47	My Green Mattress The Natural Escape ⁴	60	\$1,000	↑	↑	↑	↓	↓	↓	↑	↓	3	•
	48	Beautyrest Black Katarina Lux-Firm Pillowtop	59	\$2,350	↑	↑	↑	↓	↓	↓	↑	↑	2	
	49	Sealy Performance Kenney [®]	59	\$700	↓	↓	↓	↑	↑	↓	↑	↓	5	
	50	Serta Perfect Sleeper Soothing Haven Pillowtop [®]	58	\$1,775	↓	↓	↓	↓	↓	↓	↑	↑	2	
	51	Serta iComfort Expertise Super Pillowtop [®]	58	\$1,775	↑	↑	↑	↓	↓	↓	↑	↑	2	
	52	Serta iComfort Hybrid Expertise Firm [®]	55	\$1,775	↑	↑	↓	↓	↓	↓	↑	↑	3	
	53	Spring Air Back Supporter Perfect Balance Sophia	55	\$700	↓	↓	↑	↓	↓	↓	↑	↓	3	
	54	Hotel Collection Vitagenic Cushion Firm HL ²	53	\$2,800	↑	↓	↓	↓	↓	↓	↑	↑	2	
	55	Classic Brands Hybrid Gramercy [®]	52	\$395	↑	↑	↑	↓	↓	↓	↑	↓	2	
	56	Ikea Holmsbu	52	\$800	↑	↑	↑	↓	↓	↓	↑	↑	2	
	57	Modern Sleep Pillowtop Hybrid [®]	50	\$595	↑	↑	↓	↓	↓	↓	↑	↑	2	•
	58	Classic Brands Mercer Hybrid [®]	49	\$440	↓	↓	↑	↓	↓	↓	↑	↑	2	•
	59	Serta iComfort Smart Support HB300Q [®]	46	\$2,275	↓	↓	↓	↓	↓	↓	↑	↑	2	
	60	Ashley Sleep American Classic Plush Latex ²	46	\$1,500	↑	↓	↓	↓	↓	↓	↑	↑	2	

HOW WE TEST: We calculate the **Overall Score** primarily by evaluating a mattress's side and back support, durability, and stabilization. For adjustable air mattresses, we use an average of firmness levels. **Support** for side sleepers is the ability to keep a side sleeper's spine relatively horizontal.

Support for back sleepers is the ability to maintain the natural curve of a back sleeper's spine. In our support tests, we use a woman 4 feet 11½ inches to 5 feet 1½ inches tall and 110 to 127.5 pounds for the **Petite sleeper** scores, and a man 6 feet 2 inches to 6 feet 4 inches tall and 220 to 242 pounds for

the **Large/tall sleeper** scores. The **Average sleeper** is an average of the two sizes. **Durability** gauges a mattress's ability to keep its original shape, height, firmness, and support after a simulated eight to 10 years of use, including our passing a 308-pound roller over each mattress 30,000 times. A high score for

Stabilization indicates little or no bouncing or vibration transferred for innersprings, and ease of movement and changing positions for foam. We rate **Firmness** on a scale of 1 to 10, with 10 being the firmest. **Price** is approximate retail for a queen-size mattress without a box spring.